

# VICTORY SERIES

## Pipe Beveling Machines

1. Cutter can hold 3 tool bits process in one time Automatic welding require the OD Beveling, facing and internal beveling. Only 3 side processing finish in one time can guarantee the precision of beveling. The cutter can install 3 pcs tool bits, meet the demands.
2. New expanding structure new designed expanding structure makes the fix more stable and low failure rate
3. New-design main shaft fixation there will be smaller gap of the machine. Performs beveling more smooth, less vibration.

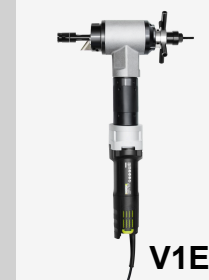


### V1

#### Driven Option:

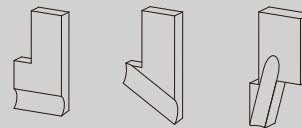
V1P Air Operated  
V1E Electric Operated, China Motor  
V1B Electric Operated, BOSCH Motor

Clamping Range (ID): 16-25mm  
Working Range (OD): 1" (33.4mm)



### Specification

Model	V1P	V1E	V1B
Driven	Pneumatic	Electric	Bosch Motor
Power Supply	900L/Min @ 0.6Mpa	220-240V 1PH 50/60HZ	220-240V 1PH 50/60HZ
Motor Power	1 HP	720W	850W
Clamping Range (ID)	16-25	16-25	16-25
Working Range (OD)	1"(33.4mm)	1"(33.4mm)	1"(33.4mm)
Wall Thickness	< 8mm	< 8mm	< 8mm
Rotation Speed	66r/min	52r/min	48r/min
Working Weight	7kg	8kg	8kg
Shipping Weight	14kg	16kg	16kg
Packing Size	540*410*170mm	540*410*170mm	540*410*170mm
Tool Number	2	2	2

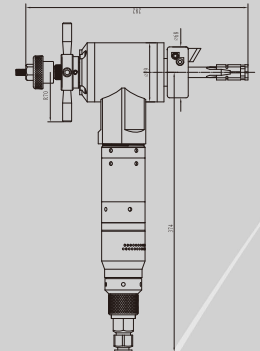


#### Tool Bits

Standard Tool, V Type Prep. U Type Prep.  
Facing, Inside Beveling  
\*Consult with us for special demand

#### Standard Supply:

Machine. Driven motor, full set expanding blocks, 3 pcs tool bits.  
(1 Facing tool, 1x30deg.  
Beveling 1x37.5 deg Beveling)

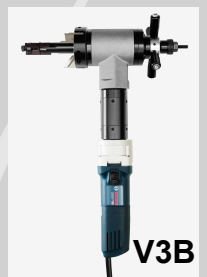
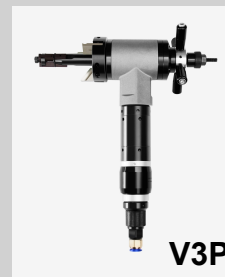


### V3

#### Driven Option:

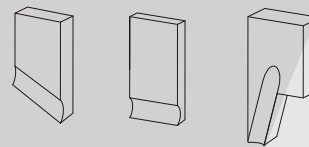
V3P Air Operated  
V3E Electric Operated, China Motor  
V3B Electric Operated, BOSCH Motor

Clamping Range (ID): 25-76mm  
Working Range (OD): 3" (88.9mm)



### Specification

Model	V3P	V3E	V3B
Driven	Pneumatic	Electric	Bosch Motor
Power Supply	900L/Min @ 0.6Mpa	220-240V 1PH 50/60HZ	220-240V 1PH 50/60HZ
Motor Power	1 HP	720W	850W
Clamping Range (ID)	25-76	25-76	25-76
Working Range (OD)	3"(88.9mm)	3"(88.9mm)	3"(88.9mm)
Wall Thickness	< 15mm	< 15mm	< 15mm
Rotation Speed	66r/min	52r/min	48r/min
Working Weight	8.5kg	9kg	9kg
Shipping Weight	15kg	16kg	16kg
Packing Size	540*410*170mm	540*410*170mm	540*410*170mm
Tool Number	3	3	3

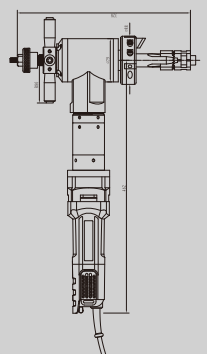


#### Tool Bits

Standard Tool, V Type Prep. U Type Prep.  
Facing, Inside Beveling  
\*Consult with us for special demand

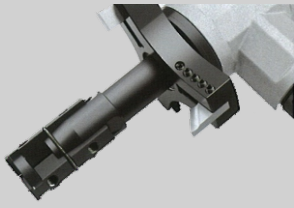
#### Standard Supply:

Machine. Driven motor, full set expanding blocks, 3 pcs tool bits.  
(1 Facing tool, 1x30deg.  
Beveling 1x37.5 deg Beveling)



# VICTORY SERIES

## Pipe Beveling Machines



### V6

#### Driven Option:

V6P Air Operated  
V6E Electric Operated, China Motor  
V6B Electric Operated, BOSCH Motor



V6P



V6E



V6B

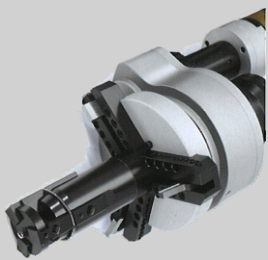
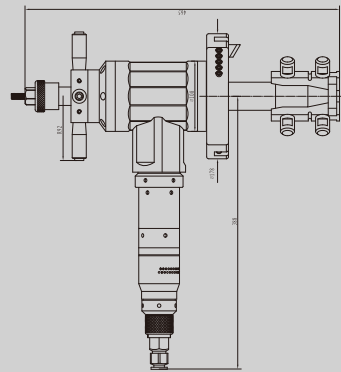
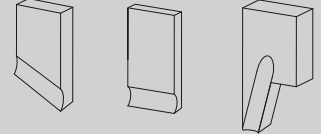
### Specification

Clamping Range (ID): 60-159mm  
Working Range (OD): 6" (168.28mm)

Model	V6P	V6E	V6B
Driven	Pneumatic	Electric	Bosch Motor
Power Supply	900L/Min @ 0.6Mpa	220-240V 1PH 50/60HZ	220-240V 1PH 50/60HZ
Motor Power	1 HP	1050W	1000W
Clamping Range (ID)	60-159mm	60-159mm	60-159mm
Working Range (OD)	6"(168.28mm)	6"(168.28mm)	6"(168.28mm)
Wall Thickness	< 20mm	< 20mm	< 20mm
Rotation Speed	61r/min	36r/min	38r/min
Working Weight	16kg	17kg	17kg
Shipping Weight	29kg	31kg	31kg
Packing Size	560*550*250mm	560*550*250mm	560*550*250mm
Tool Number	3	3	3

#### Tool Bits

Standard Tool  
V Type Prep.  
U Type Prep.



### V8

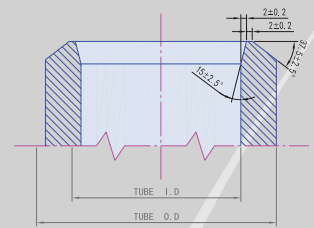
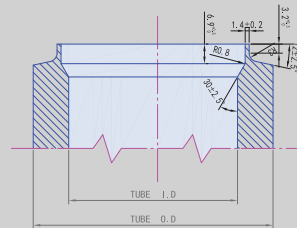
#### Driven Option:

V8P Air Operated  
V8E Electric Operated, China Motor

### Specification

Clamping Range (ID): 65-210mm  
Working Range (OD): 8" (219.08mm)

Model	V8P	V8E
Driven	Pneumatic	Electric
Power Supply	1200L/Min @ 0.6Mpa	220-240V 1PH 50/60HZ
Motor Power	1.5 HP	1200W
Clamping Range (ID)	65-210mm	65-210mm
Working Range (OD)	8"(219.088mm)	8"(219.088mm)
Wall Thickness	< 20mm	< 20mm
Rotation Speed	50r/min	24r/min
Working Weight	26kg	28kg
Shipping Weight	41kg	44kg
Packing Size	650*280*250mm	650*280*250mm
Tool Number	3	3



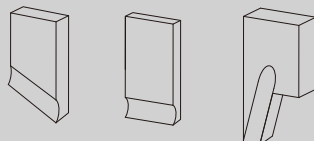
V8P



V8E

#### Tool Bits

Standard Tool, V Type Prep, U Type Prep.  
Facing, Inside Beveling  
\*Consult with us for special demand



#### Standard Supply:

Machine, Driven motor, full set expanding blocks, 3 pcs tool bits.  
(1 Facing tool, 1x30deg Beveling 1x37.5 deg Beveling)

# VICTORY SERIES

## Pipe Beveling Machines

### V14

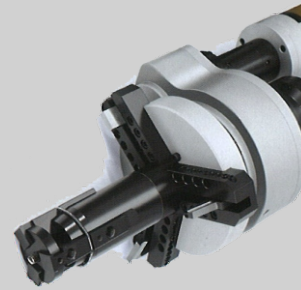
#### Driven Option:

V14P Air Operated  
V14E Electric Operated, China Motor

Clamping Range (ID): 145-340mm  
Working Range (OD): 14" (355.6mm)

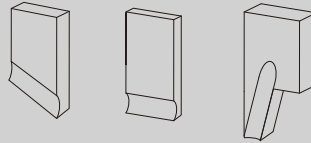
#### Specification

Model	V14P	V14E
Driven	Pneumatic	Electric
Power Supply	1200L/Min @ 0.6Mpa	220-240V 1PH 50/60HZ
Motor Power	1.5 HP	1500W
Clamping Range (ID)	145-340mm	145-340mm
Working Range (OD)	14"(355.6mm)	14"(355.6mm)
Wall Thickness	< 20mm	< 20mm
Rotation Speed	18r/min	20r/min
Working Weight	46kg	48kg
Shipping Weight	68kg	70kg
Packing Size	800*430*410mm	830*430*410mm
Tool Number	2 or 3	2 or 3



#### Tool Bits

Standard Tool, V Type Prep. U Type Prep.  
Facing, Inside Beveling  
\*Consult with us for special demand



#### Standard Supply:

Machine. Driven motor, full set expanding blocks, 3 pcs tool bits.  
(1 Facing tool, 1x30deg Beveling 1x37.5 deg Beveling)

### AK Series

High-Efficiency Self-Centering  
Pipe Cutting and Beveling Machine



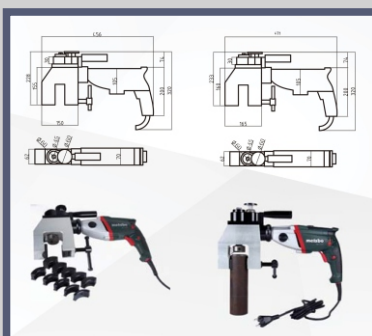
\* Only for open end pipe, can not split

#### Specification

Model	Working range	Thickness	Speed	Net Weight
AK-63	Dia. 14~63mm	< 15mm	30~120r/min	13 kgs
AK-114	Dia. 57~114mm	< 15mm	30~120r/min	16 kgs

### HPU

OD-Mounted  
Auto-Feed Pipe Beveling Machine



#### Specification

Model	Working Range OD mm	Wall thickness mm	Clamp Size OD mm
AF-63C	28-63	< 12mm	28, 32, 42, 45, 48, 51, 54, 57, 60, 63.5
AF-76C	42-76	< 12mm	42, 45, 48, 51, 54, 57, 60, 63.5, 68, 76