

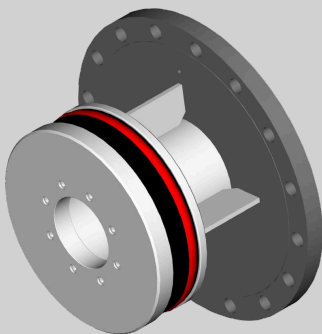
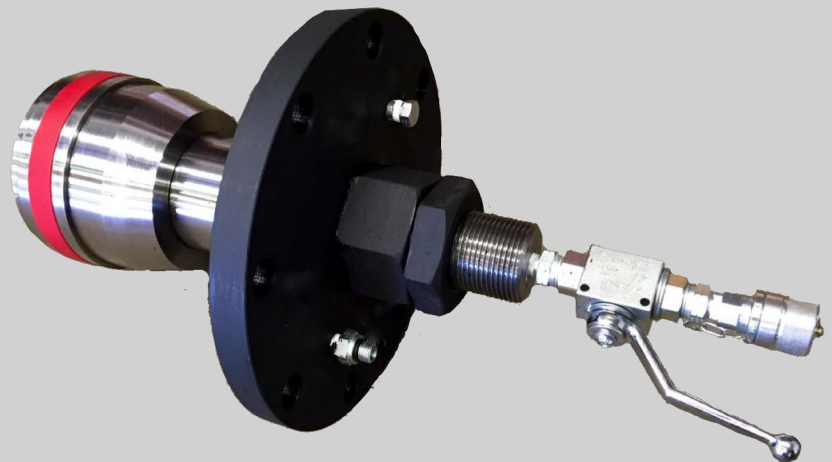


FWT Flange Weld Testers

Flange Weld Testers are designed to pressure test various types of flange connections, including, weld neck, slip-on, Quickflange, lap joint, etc., eliminating the need for a full system test. The tools are inserted into the flange connection and fastened up. The tool is then set and the annulus between the seal and the flange is then filled/ vented with the test medium and pressurised to the flange rating.

The body of the tool is made from high grade carbon steel and the seal is made from special polyurethane which has a low hysteresis. All units are hydro-tested prior to shipment and supplied with full operating instructions and pre delivery inspection report.

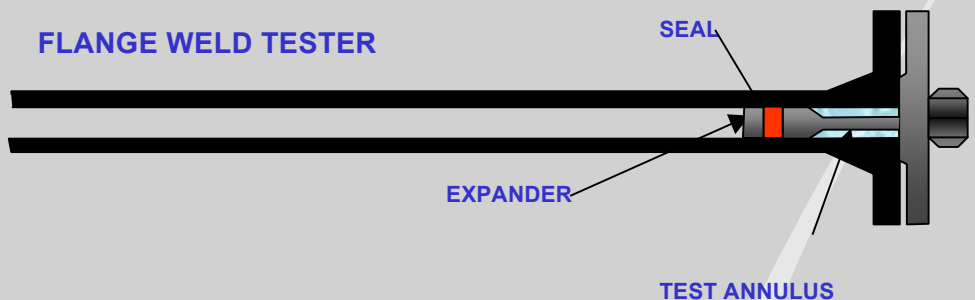
For sizes, pressure ratings and configurations the tools are available, from 1/2" thru to 36" up to ANSI 1500. Special tools can be shortened or lengthened to suit your specific requirements.



CONVENTIONAL METHOD



FLANGE WELD TESTER



When the tool is set the seal is expanded radially against the pipe bore mechanically (up to 4") or hydraulically (6" and above) to seal off the area to be tested. The annulus created is then filled and vented with the test medium and pressurised upto the required test pressure which can be up to ANSI 1500 depending on flange rating.

The tools can be set in both horizontal and vertical piping or inclined if required. Testing is achieved in a fraction of the time (and cost) of a full system test, whilst also reducing the provision and disposal costs associated with large volumes of test medium. Most tools can easily be installed and operated by one man.



FWT Flange Weld Testers

Flange Weld Tester dimension table ANSI 150 up to ANSI 300

| Size | Flange Face to seal mm | Flange face to end of hub length | Overall length | Weight kg |
|-------|------------------------|----------------------------------|----------------|--------------|
| 0.5" | 59 | 84 | 150 | 1 |
| 0.75" | 59 | 84 | 150 | 1 |
| 1" | 80 | 110 | 170 | 3 |
| 1.25" | 80 | 112 | 185 | 3.5 |
| 1.5" | 80 | 112 | 185 | 5 |
| 2" | 135 | 165 | 255 | 7 |
| 3" | 161 | 199 | 305 | 12 |
| 4" | 156 | 194 | 320 | 25 |
| 6" | 184 | 230 | 400 | 65 |
| 8" | 215 | 260 | 460 | 105 |
| 10" | 234 | 300 | 550 | 195 |
| 12" | 263 | 345 | 620 | 250 |
| 14" | 268 | 360 | 635 | 336 |
| 16" | 270 | 365 | 690 | 350 |
| 18" | 280 | 490 | 690 | 375 |
| 20" | 280 | 490 | 690 | 375 |
| 24" | 280 | 490 | 690 | 375 |

Flange Weld Tester dimension table ANSI 600 upto ANSI 900 (ANSI 1500 in Red)

| Size | Flange Face to seal mm | Flange face to end of hub length | Overall length | Weight kg | Weight ANSI 600 | Weight ANSI 900 | Weight ANSI 1500 |
|-------|------------------------|----------------------------------|----------------|--------------|-----------------|-----------------|------------------|
| 0.5" | 80 | 100 | 150 | 1 | 1 | 2 | 2 |
| 0.75" | 88 | 115 | 170 | 1 | 1 | 3 | 3 |
| 1" | 92 | 130 | 200 | 3 | 3 | 5 | 5 |
| 1.25" | 92 | 130 | 200 | 3.5 | 3.5 | 6 | 6 |
| 1.5" | 102 | 138 | 210 | 5 | 5 | 8 | 8 |
| 2" | 135 | 165 | 255 | 7 | 8 | 15 | 15 |
| 3" | 161 | 199 | 305 | 12 | 13 | 18 | 24 |
| 4" | 156 | 194 | 320 | 25 | 32 | 37 | 46 |
| 6" | 184 195 | 230 236 | 400 410 | 65 | 80 | 93 | 116 |
| 8" | 215 234 | 260 279 | 460 480 | 105 | 128 | 159 | 200 |
| 10" | 234 276 | 300 340 | 550 580 | 195 | 235 | 260 | 347 |
| 12" | 263 305 | 345 387 | 620 660 | 250 | 293 | 345 | 486 |
| 14" | 268 325 | 360 417 | 655 710 | 336 | 381 | 436 | 676 |
| 16" | 270 340 | 365 435 | 690 770 | 350 | 425 | 470 | 803 |
| 18" | 280 370 | 490 570 | 690 900 | 375 | 475 | 575 | 1024 |
| 20" | 280 390 | 490 590 | 690 925 | 420 | 547 | 662 | 1242 |
| 24" | 320 440 | 520 690 | 720 1100 | 510 | 697 | 1040 | 1820 |

NOTE: As the FWT Tools are schedule specific we don't state what schedule they will fit